

Temporary Fire Pumps



Godwin's line of high pressure Dri-Prime® pumps are the perfect solution for temporary, standby fire equipment pumping needs. Remote starts based on water line pressure drops, automatic priming, and the ability to run dry indefinitely make the Godwin Dri-Prime® the best portable temporary fire pump in the industry. When permanent fire pumping equipment needs servicing, use a Godwin pump as your standby backup.

Features

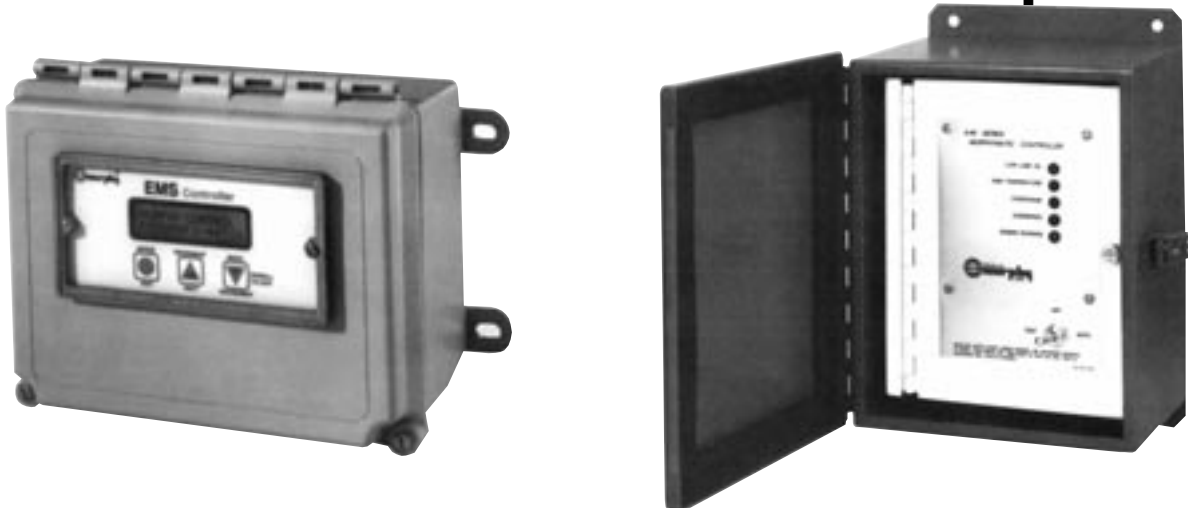
- Discharge pressure to 175 psi
- Diesel or electric drive
- Automatic Dri-Prime® priming with up to 28' suction lift
- Manual or automatic pressure controls for remote starting
- Jockey pumps available to maintain system pressure
- Field proven record of service in Refineries, Chemical & Power plants, Paper & Steel mills, and other industrial applications

Pressure Flow Chart (psi)

Pump Model	75	100	125	150	175
HL80	400	350	310	—	—
HL5	780	715	640	600	580
HL5M	1200	1200	1150	1100	975
HL6	2015	1870	1600	—	—
HL6-TS2	1850	1800	1720	1670	1010
HL10	4000	3760	3200	—	—
HLGPAC	—	4800	4210	3590	2030

Automatic Level Controls

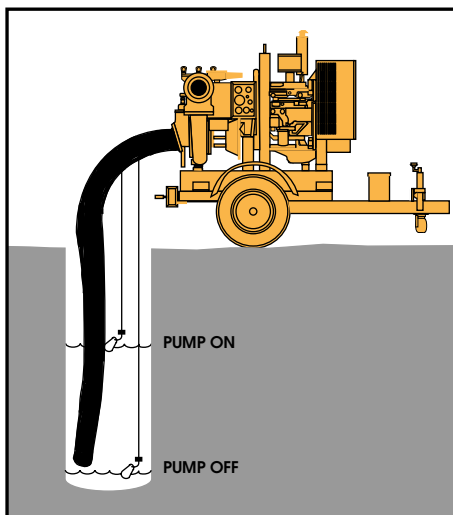
For Use with Diesel Driven Dri-Prime® Pumps



Godwin's diesel driven automatic Dri-Prime® pumps can include Automatic Level Control systems to automatically start and stop pump operation. Controls include a Programmable Electronic Transducer system or a Float Control system. Using either of these systems, your Godwin Dri-Prime® pump can start and stop automatically with no operator intervention required. Call today for more details about Automatic Level Controls for your portable pumping application.

Programmable Electronic Transducer

- Fully programmable electronic digital transducer for auto start/stop of diesel driven pump.
- Programmable alarming capability.
- Engine shutdown data retained in memory to identify when, why, and conditions for last 10 shutdowns.
- 32 character alphanumeric LCD information panel.
- Password protection security for important settings.
- Front panel selection of "OFF," "AUTO.," and "TEST" operating modes.
- Optional dry contacts available for use with automatic telephone dialing equipment.



Typical Float Control Application

Float Control System

- Starts and stops pump engine at float settings in sump.
- Field programmable engine trip points.
- Startup lockout timer.
- Front panel shutdown LED indicator lamps:
 - Low Lube Oil
 - Overcrank
 - High Temperature
 - Overspeed
- Built-In speed sensing circuit
- Front panel selection of "OFF," "AUTO.," and "TEST" operating modes.
- Optional dry contacts available for use with automatic telephone dialing equipment.

godwin
pumps

One Floodgate Road, Bridgeport, NJ 08014
(856) 467-3636
Fax: (856) 467-4841
www.godwinpumps.com

Norwich, CT • Batavia, NY • Lansing, IL
Upper Marlboro, MD • Richmond, VA • Virginia
Beach, VA • Charleston, WV • N. Charleston, SC
Houston, TX • Acworth, GA • Raleigh, NC